

Mounting Instructions

1. Drill panel as in Fig. 1.
2. Mount potentiometer in panel hole (Fig. 2) such that the end of the potentiometer spindle is between 12 and 20 mm from the panel. Under these conditions the potentiometer mounting bush should not project more that 4 mm from the front of the panel.
3. Fit anti-rotation washer onto front panel utilizing potentiometer fixing nut.
4. Rotate potentiometer spindle fully anti-clockwise.
5. Slide dial mechanism onto potentiometer spindle and locate mechanism anti-rotation spigot in washer slot.
6. Whilst gently holding the dial mechanism in place against the panel, rotate dial anti-clockwise until the reading is zero and firmly tighten the allen screw onto the spindle using the key provided.
7. Check operation of dial, and readjust zero setting if necessary.

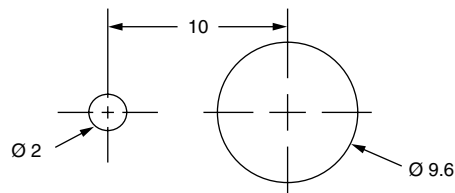


Fig. 1 - Panel drilling (mm)

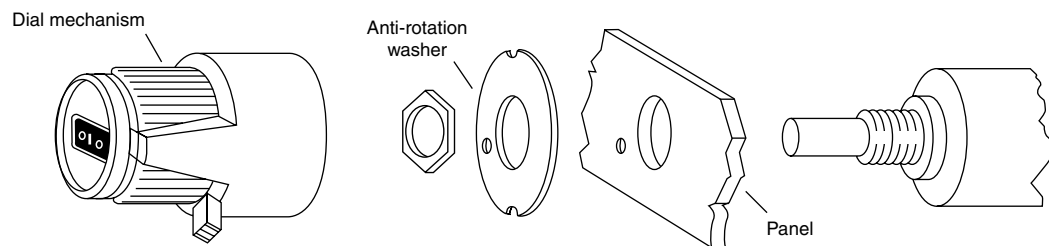


Fig. 2